



Stacy Hutchinson, Ph.D

Biological and Agricultural Engineering
Kansas State University
Manhattan, KS 66502

Fulbright Specialist



FULBRIGHT SCHOLAR PROGRAM

A program of the United States Department of State
Bureau of Educational and Cultural Affairs

Stay connected:

Go

Home

About Us

Programs

News & Media

On Campus

Contact Us



Fulbright International Education Administrators Seminars

The International Education Administrators (IEA) seminars help U.S. international education professionals and senior higher education officials create empowering connections with the societal, cultural and higher education systems of other countries.

[Read More >>](#)

1 2 3 4

Apply for IEA
Seminar



Explore Programs
and Awards



View the Fulbright
Scholar Directory



Register with My
Fulbright



<http://www.cies.org/about-us/what-fulbright>

KANSAS STATE
UNIVERSITY

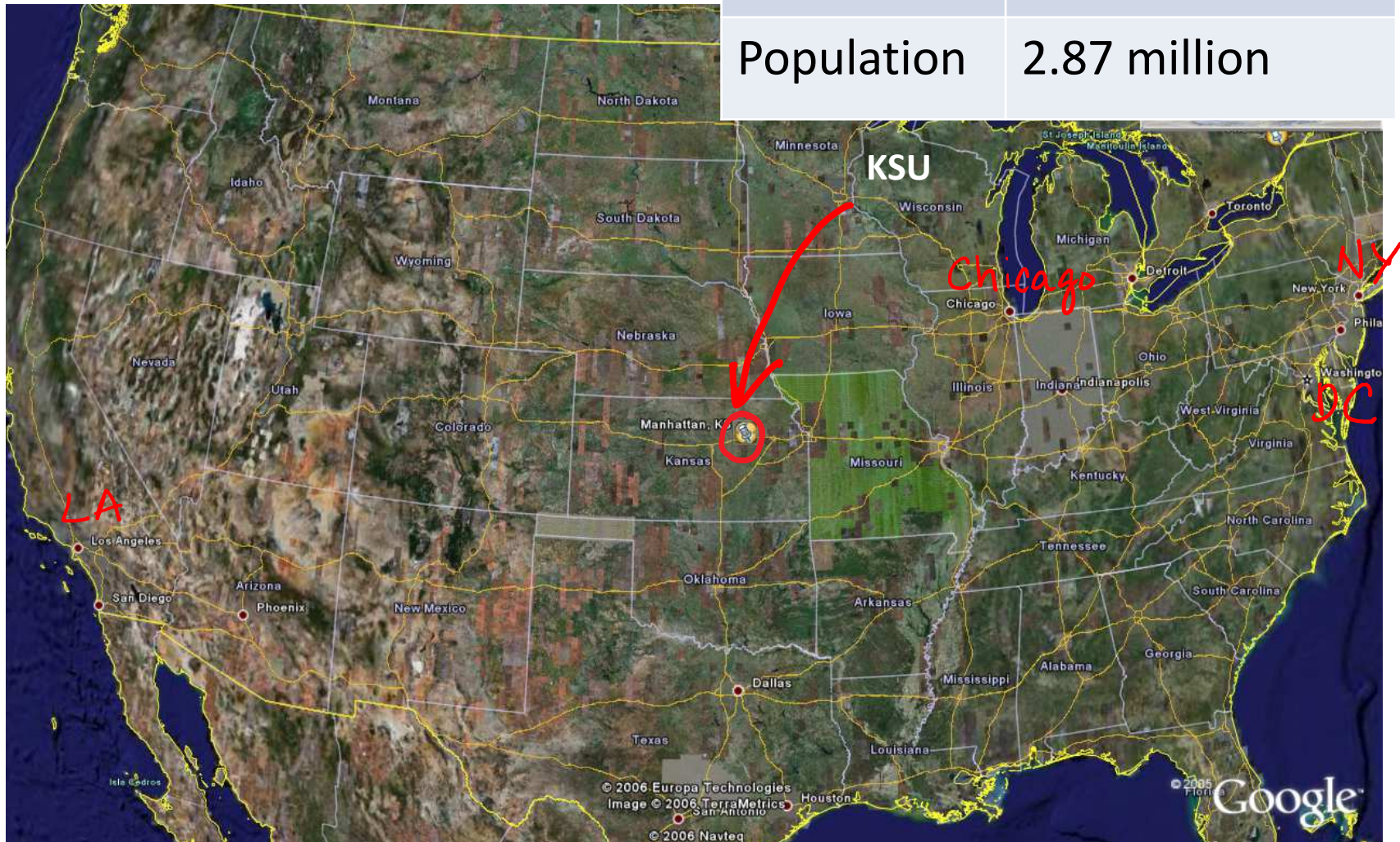
College of Engineering

My Fulbright Goals

- Share my technical expertise
- Share my teaching knowledge
- Learn about research at National Mining University
- Learn about Ukrainian education system
- Learn about Ukrainian culture

State of Kansas

Land area	213,096 km ²
Population	2.87 million



State of Kansas

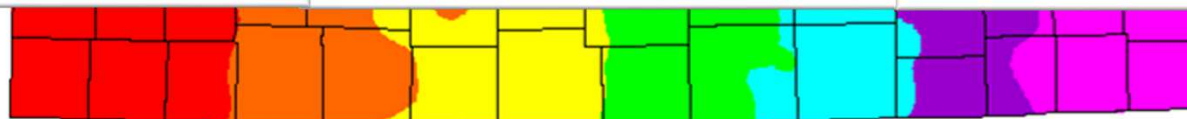


State of Kansas





Average Annual Precipitation



Legend (in inches)	
Under 20	32 to 36
20 to 24	36 to 40
24 to 28	Above 40
28 to 32	

Period: 1961-1990

This map is a plot of 1961-1990 annual average precipitation contours from NOAA Cooperative stations and (where appropriate) USDA-NRCS SNOTEL stations. Christopher Daly used the PRISM model to generate the gridded estimates from which this map was derived; the modeled grid was approximately 4x4 km latitude/longitude, and was resampled to 2x2 km using a Gaussian filter. Mapping was performed by Jenny Weisburg. Funding was provided by USDA-NRCS National Water and Climate Center.

12/7/97

Kansas Agriculture – Top 5 Products

- Cattle and Calves
- Wheat
- Corn
- Sorghum
- Soybeans



Kansas State Animal - Bison



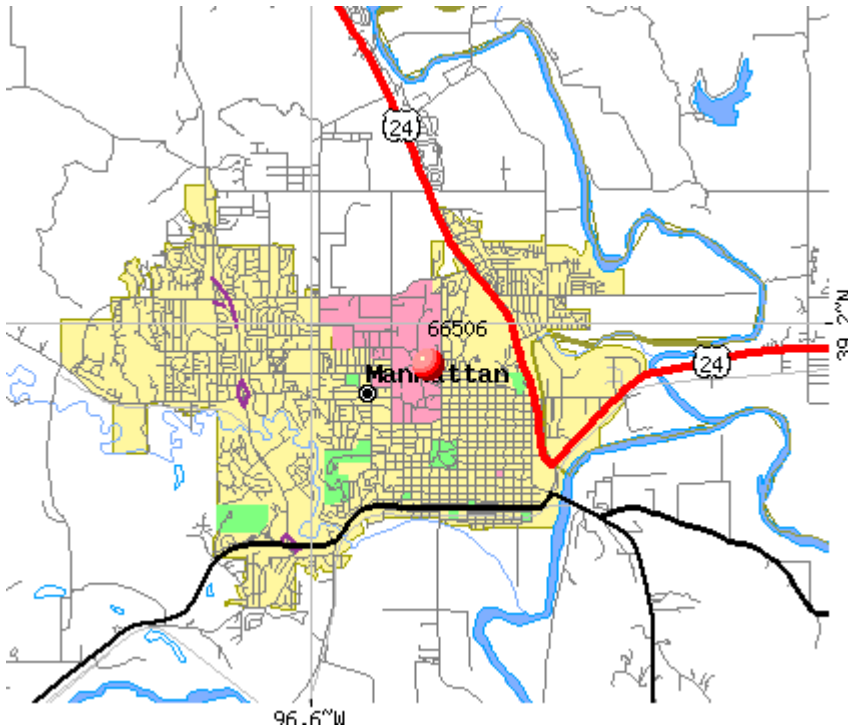
Kansas State Flower - Sunflower



Kansas State Bird - Meadow Lark



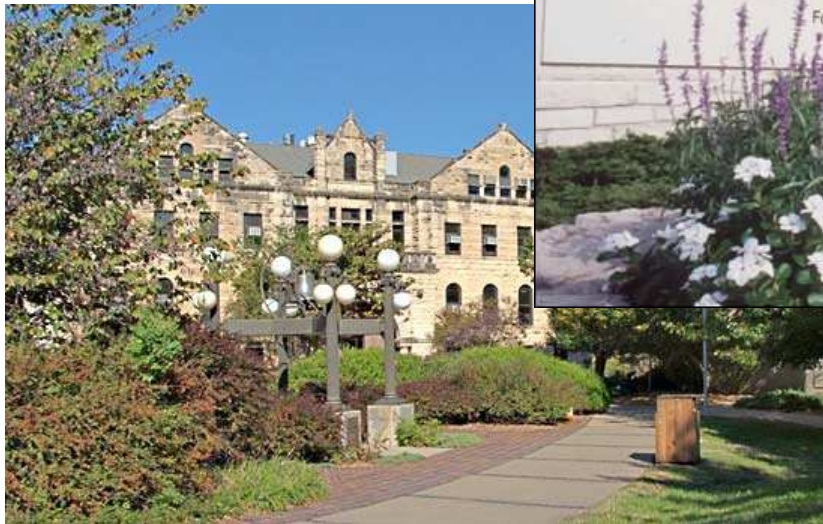
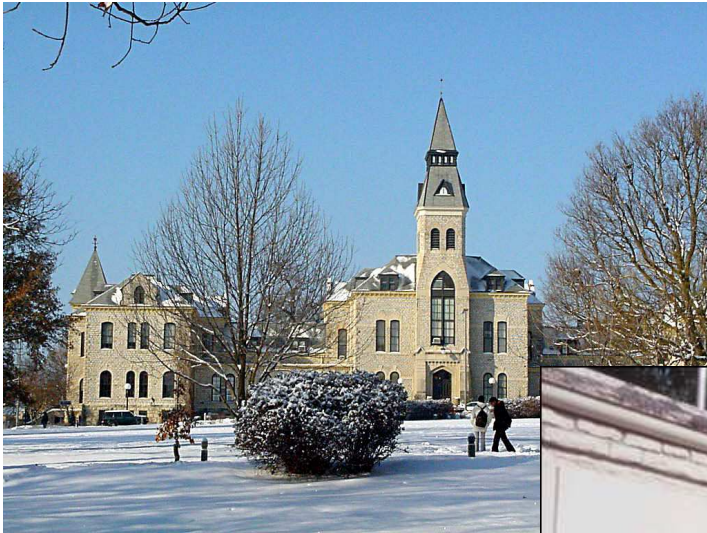
Manhattan, Kansas



Population: 55,000



Kansas State University



KSU – By the numbers



1863 Year KSU was founded

24,300+ students (from all 50 states and >100 countries)

250+ undergrad majors & options; 65 M.S. degree; and 45 Ph.D degree programs

9 colleges (Agriculture, Architecture, Arts & Sciences, Business Admin, Education, Engineering, Human Ecology, Aviation & Technology, Vet Med)

College of Engineering



KANSAS STATE
UNIVERSITY

College of Engineering

Engineering - By the Numbers



8 Academic departments

3,666 undergraduate students in 11 degree programs



531 undergraduate degrees granted

474 graduate enrollment



138 graduate degrees granted

123 Tenured, tenure-track faculty

Engineering - Departments

Architectural Engineering & Construction Science

Biological & Agricultural Engineering

Chemical Engineering

Civil Engineering

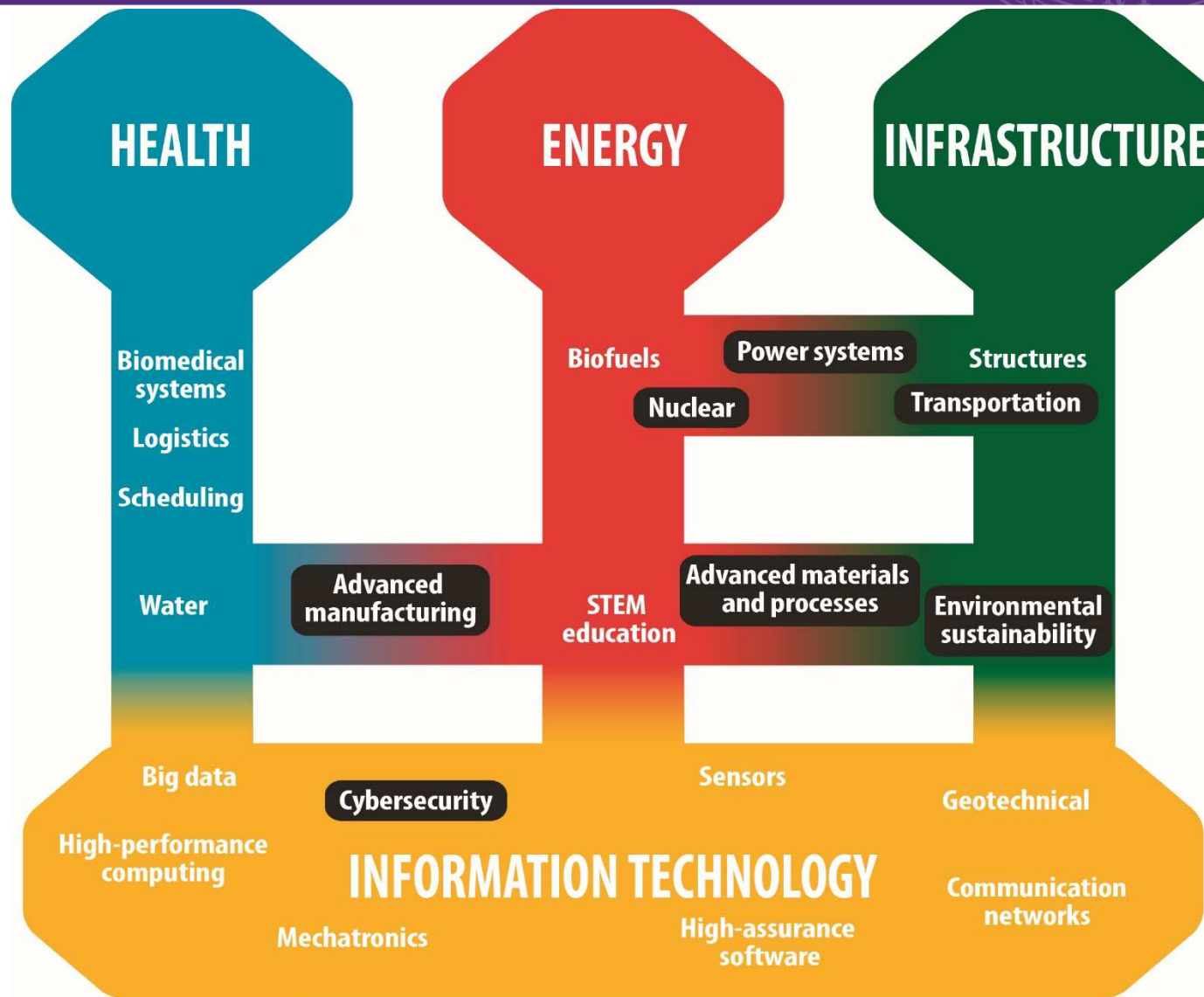
Computing & Information Sciences

Electrical & Computer Engineering

Industrial & Manufacturing Systems Engineering

Mechanical & Nuclear Engineering

Engineering - Research Areas

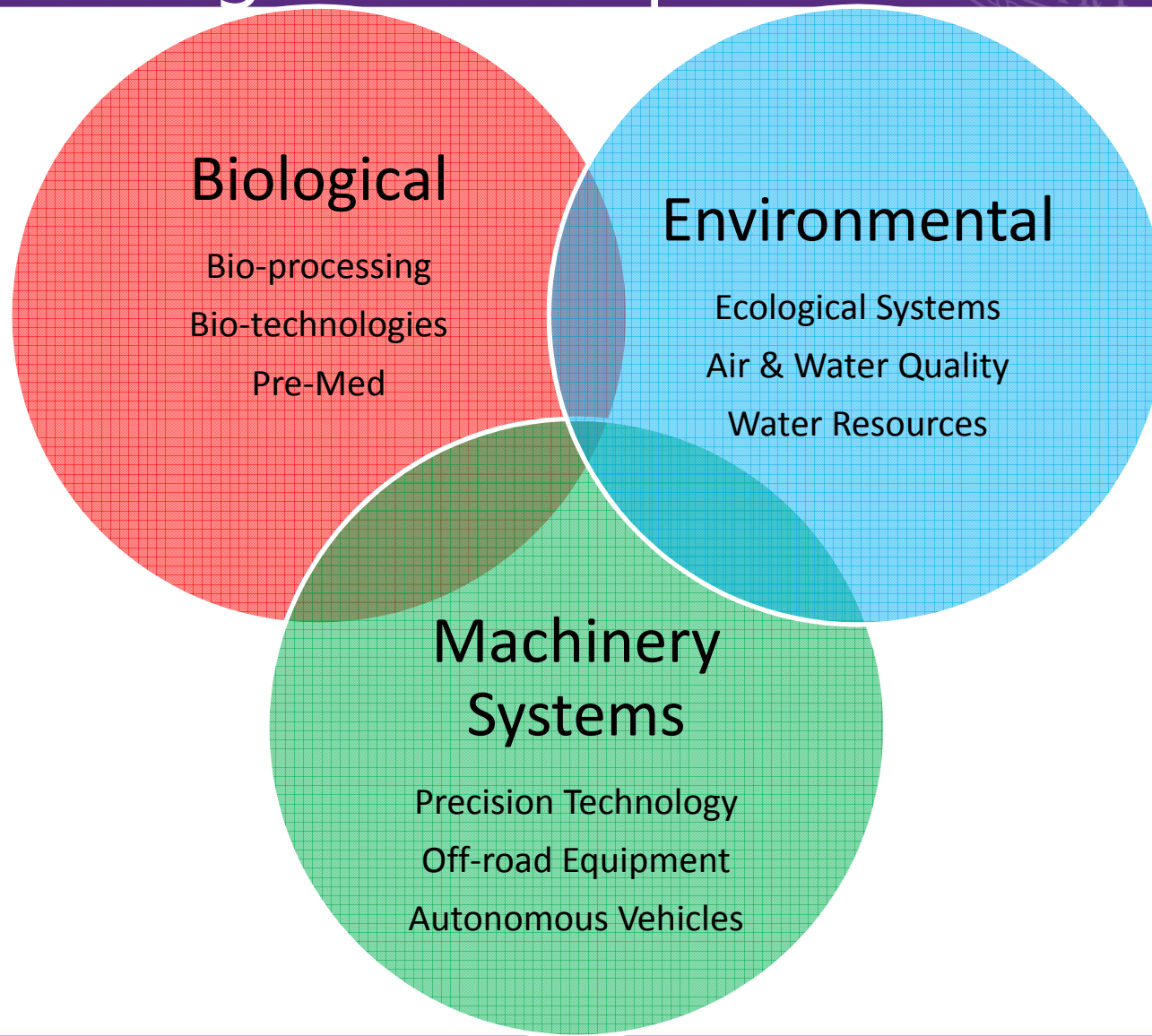


Biological and Agricultural Engineering

- 142 Biological Systems Engineering/BAE undergraduate students
- 75 Agricultural Technology Management (ATM) students
- 36 Graduate students (19 Ph.D., 15 M.S.)
- 20 Faculty

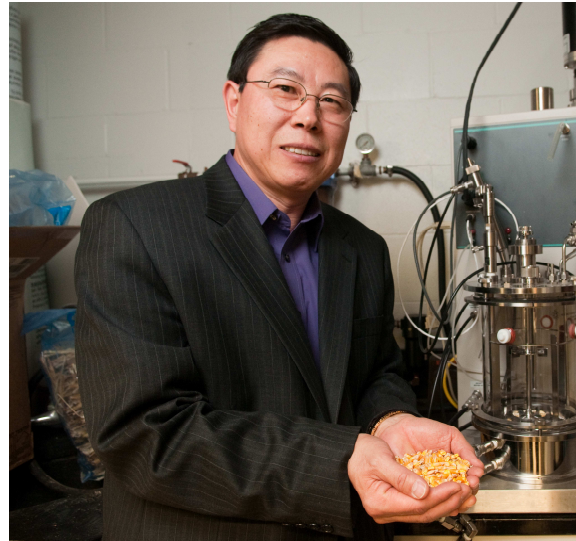


BSE Undergraduate Options



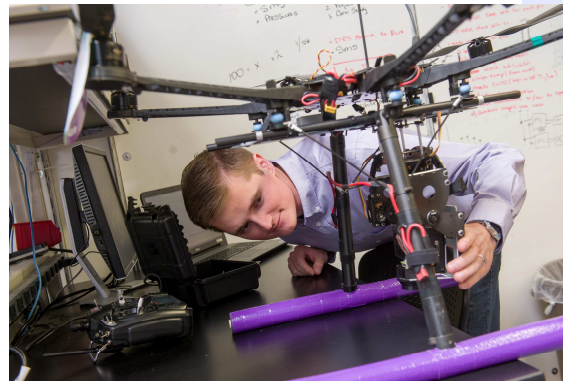
Advanced Biological Products Research

- Recovery and purification of protein and oil products
- Bioengineering for health diagnosis
- Bioconversion of renewable materials into biofuels and chemicals



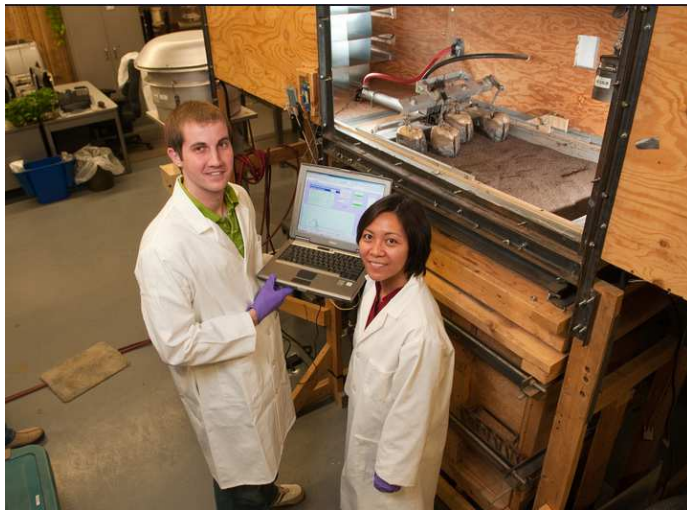
Terra-Machine & Mechatronics Research

- Automation, mechatronics, and off-road systems
- Precision agriculture, variable rate technologies, machinery automation for UAV
- Sensors, image processing, wireless sensor network.



Environmental Sustainability Research

- Water Resources
- Ecological Engineering
- Watershed Management
- Air Quality
- Irrigation





- Shawn Hutchinson
 - Professor of GIS
- Children:
 - Mitch (15 yrs)
 - Marleigh (13 yrs)

Mocha
Maizy



Your turn....

- Name
- Hometown
- Degree Program
- Favorite activity/hobby